

In-Stock Thick Film Heaters Ideal for Clamp-On Applications

Watlow's 14 gauge, 430 stainless steel thick film conduction heaters are ideal for use in many applications where fast response and uniformity are essential. These high performance heaters use thick film technology to provide maximum temperature response in a compact package.

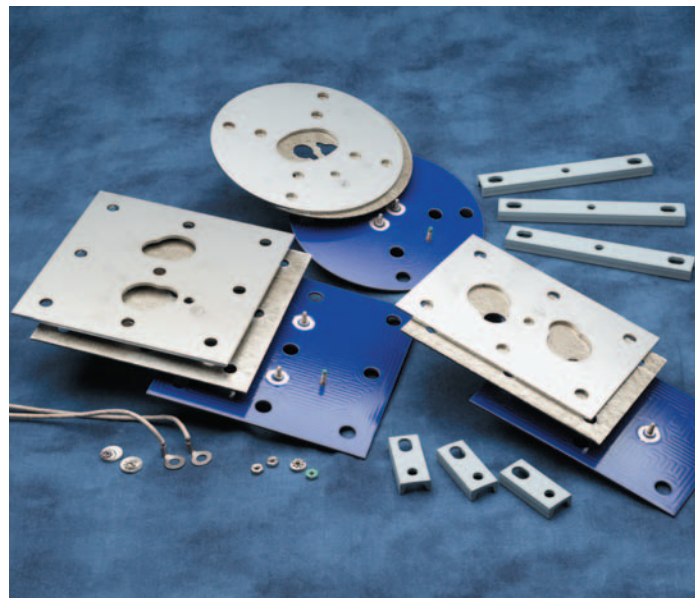
A clamp-on thick film heater provides the best possible combination of heat transfer, thermal efficiency and temperature uniformity. For example, clamping the thick film conduction heater on to a 316 stainless steel pan or aluminum griddle in foodservice applications results in uniform cooking and heating.

This technology can be applied in areas where space is at a premium or where conventional heaters cannot be used because of limited voltage and wattage combinations.

Thick film conduction heaters provide a low-profile heater in a variety of shapes. These shapes include two-dimensional circular, rectangular and square forms. Due to the direct surface contact, thick film heaters ensure greater heat transfer through thermally stable substrates and precise heater patterns.

Applications

- Foodservice
- Industrial machines
- Life sciences
- Plastics
- Semiconductor



Features and Benefits

550°C (1025°F) maximum substrate temperature (dependent upon application demands and substrate material)

- Allows for higher process temperatures than most conduction heater technologies

UR® File #E52951 CSA available

- Consult factory for current status of agency recognitions
- Also conforms with applicable CE directives

High watt densities for clamp-on applications

- Allows for precise, repeatable wattage distribution and uniform temperature distribution

Threaded stud termination

- Produces strong, trouble-free connections, see Termination Assembly drawing on back page



HAN-TFCH-0504

#6 Industrial Loop Road
P.O. Box 975
Hannibal, Missouri 63401 USA
Phone: +1 (573) 221-2816
FAX: +1 (573) 221-7578
Internet: www.watlow.com
e-mail: info@watlow.com

UR® is a registered trademark of Underwriter's Laboratories, Inc.

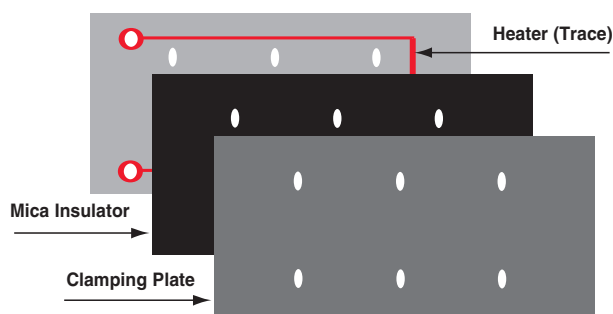


Thick film conduction heaters, designed for clamp-on applications, are supplied as a multi-part assembly: heater, mica insulator, clamping plate and mounting hardware.

The mica insulator acts as a thermal barrier to more effectively force the heat into the part being heated, as well as an additional protective layer for the heater.

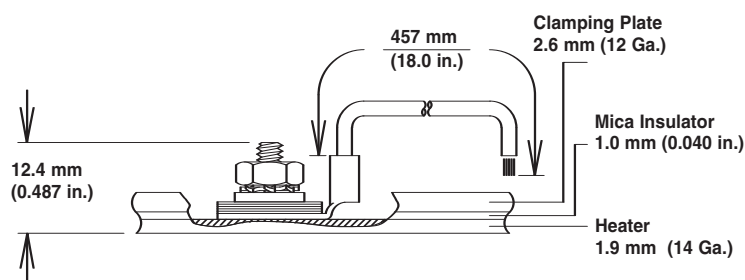
The clamping plate distributes the pressure loading evenly across the entire surface of the heater to promote intimate contact between the thick film heater and the part being heated.

The mounting hardware has been designed to provide the most effective means to clamp the heater to the part being heated, based on the size of the heater.



Termination Assembly

To install, mount the heater to the surface being heated and assemble mounting hardware. Standard measurements of assembly hardware are illustrated in the Termination Assembly drawing to the right. Please refer to the Installation & Maintenance Manual (316-42-32-1) that is supplied with the heater for proper mounting instruction.



Stock Product List

Heater Size mm (inch)	Voltage	Wattage ^①	W/cm ²	W/in ²	Approximate Assembly Weight kg (lbs)		Watlow Code Number
Round							
114 dia. (4.5)	120	325	3.2	(20.4)	0.50	(1.10)	TFA004JA03EL18B
152 dia. (6)	120	850	4.7	(30.1)	1.24	(2.74)	TFA006AA08KL18C
152 dia. (6)	240	1125	6.2	(39.8)	1.24	(2.74)	TFA006AE11EL18C
203 dia. (8)	240	2000	6.2	(39.8)	2.23	(4.91)	TFA008AE200L18C
254 dia. (10)	240	3000	5.9	(38.2)	3.28	(7.24)	TFA010AE300L18C
Square							
57 X 57 (2.25 X 2.25)	120	100	3.1	(19.8)	0.12	(0.27)	TFA2E2EA010L18B
76 X 76 (3 X 3)	120	225	3.9	(25.0)	0.23	(0.5)	TFA3A3AA02EL18B
102 X 102 (4 X 4)	120	400	3.8	(25.0)	0.73	(1.61)	TFA4A4AA040L18C
152 X 152 (6 X 6)	120	1250	5.4	(34.7)	1.70	(3.74)	TFA6A6AA12KL18C
152 X 152 (6 X 6)	240	1450	6.3	(40.3)	1.70	(3.74)	TFA6A6AE14KL18C
203 X 203 (8 X 8)	240	2500	6.1	(39.1)	2.88	(6.36)	TFA8A8AE250L18C
Rectangle							
51 X 102 (2 X 4)	120	240	4.6	(30.0)	0.21	(0.47)	TFA2A4AA02HL18B
102 X 152 (4 X 6)	120	725	4.7	(30.2)	1.12	(2.46)	TFA4A6AA07EL18C
152 X 203 (6 X 8)	240	1920	6.2	(40.0)	2.27	(5.01)	TFA6A8AE19DL18C

^①Wattage output at 25°C (77°F).

Note: Size and wattage may vary with future design enhancements. Please consult factory for current wattage information and pricing.

To be automatically connected to the nearest North American Technical and Sales Office call:

1-800-WATLOW2

International Technical and Sales Offices: Australia, +61 (39) 335-6449 • China, +86 (21) 6277-2138 • France, +33 (01) 3073-2425 • Germany, +49 (0) 7253-9400-0 • Italy, +39 (02) 458-8841 • Japan, +81 (03) 5403-4688 • Korea, +82 (02) 575-9804 • Malaysia, +60 (4) 641-5977 • Mexico, +52 (442) 217-6235 • Singapore, +65 6778-5488 • Spain, +34 916 759 192 • Sweden, +46 31 7014959 • Taiwan, +886 (0) 7-288-5168 • Sweden, +46 31 7014959 • United Kingdom, +44 (0) 115-964-0777